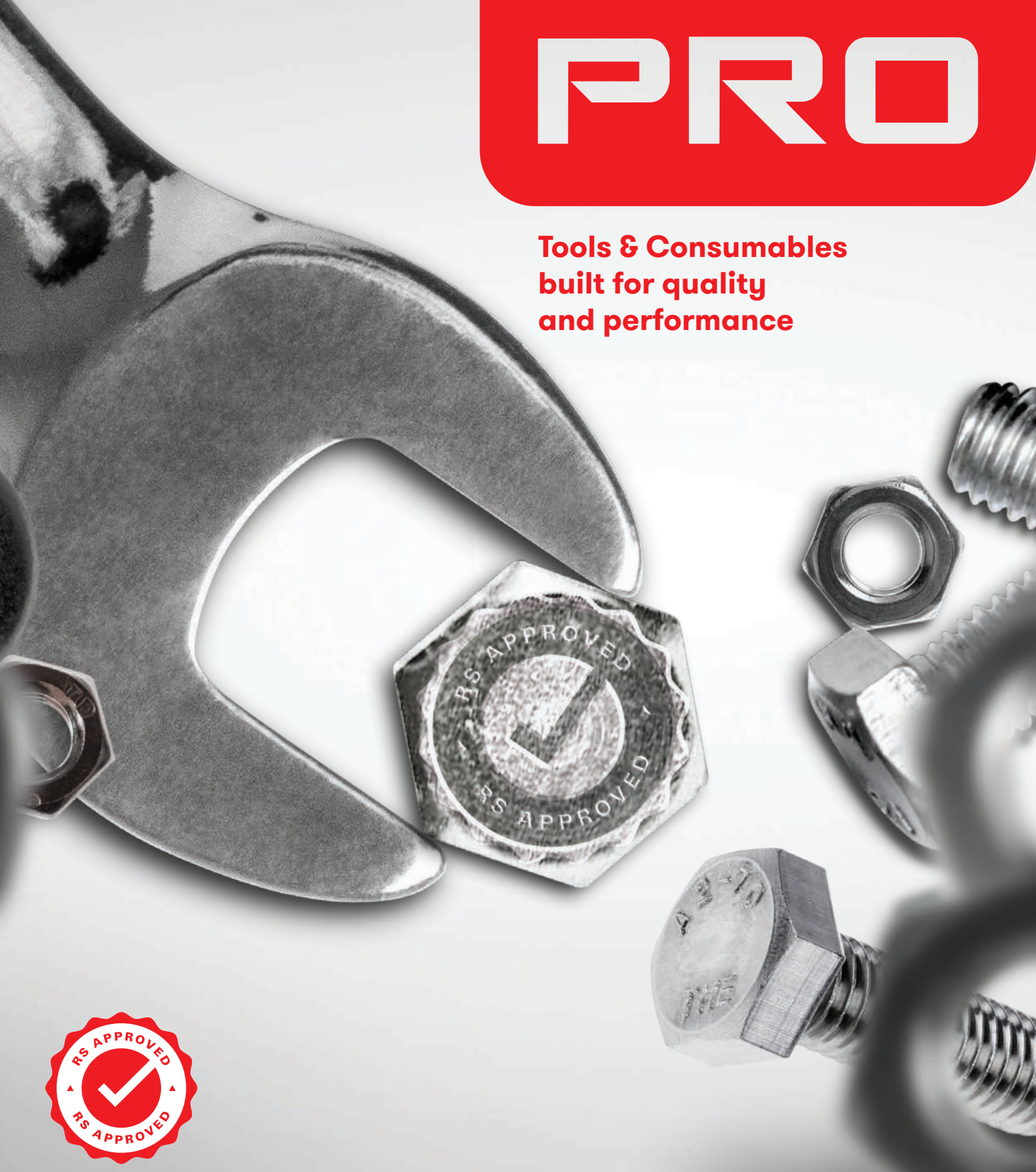


# PRO

**Tools & Consumables  
built for quality  
and performance**



**Every RS Pro product is backed by the  
RS Seal of Approval**

There are over 40,000 RS Pro products to choose from and you'll find the RS Seal of Approval on every item in the range.

**All RS Pro products are tested to appropriate industry standards including:**



[rspro.com](http://rspro.com)

**Every part matters**



# Your One-Stop-Shop Supplier



Genuine parts from leading brands  
available wherever you are.



[my.rs-online.com/industrial](https://my.rs-online.com/industrial)



# Contents

4 TE Connectivity

6 Schneider

8 Siemens

9 ABB

10 Fluke

12 Phoenix

13 RS Pro

# Make RS your one-stop supplier

Where can I find **all the products I need, ready for immediate dispatch?**

Where can I find **expert technical support to help me choose the right product?**

Where can I access **free online resources to help me integrate new parts into my designs and workflows?**

Where can I find **related parts and equipment to help me complete my project?**

Where can I connect **with other engineers and designers to find inspiration and support?**

Where can I find a **one-stop supplier to help me become more efficient and more productive?**



## APAC Focus



Join the conversation



## Terms & Conditions

To view our latest prices, charges and full terms see RS Conditions of Sale as set out online at [au.rs-online.com](http://au.rs-online.com). Prices correct at the time of going to print, prices exclude VAT. Published by: RS Components Limited.

RS Components Ltd 2017.  
RS are trademarks of RS Components Limited.  
An Electrocomponents Company.

## Local Focus



# Find everything you need, all in one place

With 500,000 products in stock, RS offers unrivalled choice and availability.

Our powerful online search and expert technical support enable you to quickly find the best part for the job. And our effortless ordering and same-day despatch help you minimize downtime and boost efficiency.

Innovative products from the world's best-known brands RS stocks genuine parts from 2,500 world-class brands, and our close ties with leading manufacturers mean we're regularly first to market with new industrial components and tools. Plus our impressive technical resources can help you seamlessly integrate these new technologies into your designs and workflows.

For high-quality products from the world's leading industrial brands, plus exceptional service and support, make RS your first-choice technology supplier – we're here for you.

Take tighter control of your procurement and get everything you need, all in one place – at [my.rs-online.com/industrial](http://my.rs-online.com/industrial).



## Member get Member (MGM) Program

### Recommend RS as a supplier

If you know someone who could benefit from our extensive product range and outstanding service, why not recommend us as a supplier?

You and your friends will enjoy a **5% discount** on your first order, and a **10% discount** on your second order. Plus we'll send you both a **free coffee coupon**. For more information, please visit [my.rs-online.com/industrial](http://my.rs-online.com/industrial)

[my.rs-online.com](http://my.rs-online.com)

## Circular Plastic Connectors

- TE Connectivity's CPC Series 1 & 2 cable mount shells are designed to provide a quick, safe and convenient connection system, with a securing screw-down coupling ring and standard and low-density variants available.



**680-6794** Series 2, shell size 11, 8W206434-1

**680-6788** Series 1, shell size 11, 4W 206429-1

**680-6826** Series 1, shell size 13, 9W206708-1

**680-6769** Series 1, shell size 17, 14W206044-1

**680-6744** Series 1, sz 17, std, 16W 206037-1

## Industrial Automation Cable Assemblies

- The M8 to M12 Connector cable assembly is ideal for secure connections in sensor and automation applications.



**892-0564** M8 PLUG- M12 SKT, 2273109-4  
4P 1.5M AA

**892-0397** M8 STR PLG-M12 STR SKT, 1-2273109-4  
4P 1.5M

**892-0567** M8 SKT- M12 PLUG, 2273110-4  
3P 1.5M AA

**892-0561** M8 SKT- M12 PLUG, 2273111-4  
4P 1.5M AA

**892-0407** M8 STR SKT-M12 STR PLG, 1-2273111-4  
4P 1.5M

## Industrial USB Series

- TE Connectivity presents these industrial Type A USB 2.0 plug connector kits with a 480Mbits/s data rate and plug and play capability. These industrial type A USB plugs have a 40 N retention force to prevent accidental unplugging.



**706-0181** Connector, plug, 2013798-1  
USB A Kit

**718-7218** PLUG Cable mount 2040305-1  
solder USB 2.0

## M12 Connectors

- This M12 connector is commonly used in sensor and automation applications, and has industry standard A-Coding.



**914-4500** M12.MALE.PNLREAR.AC. 5-2172075-2  
8P.PCBSTD.RA.SHLD

**914-4499** M12.FEMALE.PNLREAR.AC. 3-2172072-2  
4P.PCBSTAND.RA

**892-0220** M12 MALE CONN PNL,A CODE, 3-2271140-2  
4P.PCB TYPE

**892-0224** M12 MALE CONN PNL,A CODE, 4-2271140-2  
5P.PCB TYPE

## Industrial Mini I/O

- Industrial Mini I/O plug connectors with a compact, space saving design and a latching wire to board I/O interface. The Mini I/O plug connectors feature two points of contact on the contact interface for high electrical reliability in high vibration environments.



**703-9664** Connector 8 way plug 2040008-1  
mini I/O Type II

**703-9673** Connector 8 way plug 2013595-1  
mini I/O Type I

## Heavy Duty Power connectors

- Male and female inserts will fit either cable hood housings or base housings. Each insert has a separate earth contact, if 32 way connectors are required both the 1-16 pole (16 way) and 17-32 pole inserts should be purchased.



**300-3715** HE 16 way screw terminal 1-1103639-1  
female insert

**300-3642** HE 6way screw terminal 1-1103634-1  
male insert/6/20A

**300-3658** HE 10 way screw terminal 1-1103636-1  
male insert

**416-610** HD Connector Insert HE16 7-1103639-1  
female clamp

**416-008** HD Connector, Insert HE6 7-1103634-1  
male clamp

**300-3709** HE 10 way screw terminal 1-1103637-1  
female insert

**300-4207** HE 6 way screw terminal 1-1103635-1  
female insert

**300-3670** HE 16 way screw terminal 1-1103638-1  
male insert

## M8 Connectors

- From TE Connectivity this M8 Connector is commonly used for sensor and automation purposes. With a secure screw connection that ensures a high degree of protection and stability, this M8 Connector is well suited to industrial environments.



**892-0075** M8 CONNECTOR, STRAIGHT FIELD, 2120954-1  
MALE, 3W

**914-4461** M8 MALE R/A PNL 4P.PCB (AU) 3-2172067-2

**892-0081** M8 90 DEG. ANGLED CONNECTOR, 2120957-1  
FEMALE, 3W

**914-4584** M8.MALE.PNLREAR.3POS. 2-2172093-2  
RA.PCBSTND.SHLD

**914-4465** M8 MALE R/A PNL.3P.PCB (AU) 2-2172067-2

**892-0097** M8 CONNECTOR, STRAIGHT FIELD, 1-2120954-1  
MALE, 4W

## Field RJ45 Connectors

- A range of CPC series 45 RJ45 ethernet receptacle connectors for use with category 5 and 5e cables. These CPC series 45 ethernet receptacle connectors have IP67 sealing, a positive lock coupling ring, polarization and UL 94 V-0 housings.



**709-9773** Receptacle square flange 1546908-1  
IP67 RJ45

**782-5792** Receptacle Kit, Industrial 1776186-1  
Ethernet, CPC

**788-4451** CPC receptacle kit, 1546877-1  
series 45 ethernet

**718-2708** Receptacle Kit bulkhead 1986172-1  
RJ45 shield CPC

## Deutsch

- This HD 10 Series cable mount connector offers a sturdy and versatile plug for heavy duty connections with corresponding HD 10 receptacles. Available in 3, 6 and 9 pole contact arrangements, this HD 10 Series plug is very well suited to industrial environments.



**425-412** 9 way Size 16 sockets HD16-9-96S

**425-406** 6 way Size 16 sockets HD16-6-96S

**425-575** 6 way Size 12 sockets HD16-6-12S-B010

**425-402** 3 way Size 16 sockets HD16-3-96S

### CGAT Adhesive lined 3:1

- A flexible polyolefin heat shrink tubing with an inner melttable adhesive lining designed for the commercial marketplace. It is ideal for the environmental protection of electrical components and the sealing of conductors.



<b>157-3795</b>	6mm	CGAT-6/2-0
<b>157-3789</b>	3mm	CGAT-3/1-0-RS-157-3789
<b>157-3802</b>	9mm	CGAT-9/3-0
<b>157-3818</b>	12mm	CGAT-12/4-0
<b>157-3824</b>	18mm	CGAT-18/6-0
<b>157-3903</b>	24mm	CGAT-24/8-0
<b>157-3830</b>	40mm	CGAT-39/13-0

### D-SCE Heat Shrink Markers

- D-SCE heat shrink identification markers are designed to operate in chemically hazardous conditions at elevated temperatures for extended periods of time, where strain relief, electrical insulation and protection from mechanical abuse is required.



<b>896-7787</b>	D-SCE-1K-9.5-50-4	D-SCE-1K-9.5-50-4
<b>896-7771</b>	D-SCE-1K-3.2-50-4	D-SCE-1K-3.2-50-4
<b>896-7762</b>	D-SCE-1K-2.4-50-4	D-SCE-1K-2.4-50-4
<b>896-7778</b>	D-SCE-1K-6.4-50-4	D-SCE-1K-6.4-50-4
<b>896-7800</b>	D-SCE-1K-3.2-50-9	D-SCE-1K-3.2-50-9
<b>896-7807</b>	D-SCE-1K-6.4-50-9	D-SCE-1K-6.4-50-9
<b>896-7813</b>	D-SCE-1K-18-50-9	D-SCE-1K-18-50-9

### RNF 100 Mixed Heat Shrink Kit

- This kit contains 450 pieces of RNF100 heat shrink tubing in a variety of colours and sizes.



<b>113-2596</b>	RNF100 mixed heatshrink kit	RNF 100 KIT
-----------------	-----------------------------	-------------

### Refill Flame Retardant 2:1 CGPT

- Flexible general purpose tubing
- Resistant to most chemicals and solvents
- Excellent physical and electrical performance



<b>170-6692</b>	3.2/1.6mm	CGPT-R-3.2-0
<b>170-6686</b>	2.4/1.2mm	CGPT-R-2.4-0
<b>170-6709</b>	4.8/2.4mm	CGPT-R-4.8-0
<b>170-6715</b>	6.4/3.2mm	CGPT-R-KIT-2
<b>170-6737</b>	12.7/6.4mm	CGPT-R-12.7-0
<b>170-6743</b>	19.0/9.5mm	CGPT-R-19-0
<b>170-6759</b>	25.4/12.7mm	CGPT-R-25.4-0

### Tie-on Cable Markers CM-SCE-TP Series

- Military grade non-adhesive, flat cable markers that are used to identify large cables, pipes and wire bundles in commercial, military and aerospace environments. The markers can be applied post terminations by using cable ties.



<b>914-8114</b>	CM-SCE-TP-1/2-6H-9	CM-SCE-TP-1/2-6H-9
<b>914-8108</b>	CM-SCE-TP-1/2-4H-4	CM-SCE-TP-1/2-4H-4
<b>914-8110</b>	CM-SCE-TP-1/2-6H-4	CM-SCE-TP-1/2-6H-4
<b>914-8117</b>	CM-SCE-TP-1/2-4H-9	CM-SCE-TP-1/2-4H-9
<b>914-8123</b>	CM-SCE-TP-1/4-4H-4	CM-SCE-TP-1/4-4H-4
<b>914-8126</b>	CM-SCE-TP-1/4-4H-9	CM-SCE-TP-1/4-4H-9

### Heat Shrinkable Fabric Tubing (HFT)

- The heat shrinkable fabric tubings main function is to provide mechanical abrasion protection for components such as rubber hoses, plastic pipes and harness wiring bundles (ie test equipment leads). Applications include noise and rattle suppression.



<b>484-8941</b>	HFT 2:1 heatshrink tubing, 5m 50-25mm	HFT5000-50/25.0
<b>484-8907</b>	HFT5000 TUBING 12/6	HFT5000-12/6.0
<b>484-8957</b>	HFT5000 TUBING 60/30	HFT5000-60/30.0
<b>484-8935</b>	HFT 2:1 heatshrink tubing, 5m 40-20mm	HFT5000-40/20-0-RSU-5M
<b>542-3818</b>	Heatshrinkable fabric tubing, 30mm i/d	HFT5000-30/15.0
<b>618-9402</b>	HFT 2:1 heatshrink tubing, 10m 20-10mm.	HFT5000-20/10-0
<b>618-9575</b>	Heatshrinkable fabric tubing, 70mm i/d.	HFT5000-70/35.0

### Heatshrink Pre-Printed Cable Markers

- Irradiated polyolefin heat-shrinkable cable markers which shrink to 33% of their supplied diameter when heated above 120°C. The legends are printed in black against a white background, thus giving clear identification even under poor lighting conditions.



<b>392-387</b>	1,3mm i/d	TRSA-1019/C/1/1
<b>392-488</b>	-,3mm i/d	TRSA-1019/C/1/MINUS
<b>392-567</b>	G-,3mm i/d	TRSA-1019/C/1/G
<b>392-797</b>	3-,6mm i/d	TRSA-1019/E/1/3
<b>392-393</b>	2-,3mm i/d	TRSA-1019/C/1/2

### High-performance (Military Specification - TMS-SCE)

- High-performance, heat-shrinkable identification marker sleeves allow both sides of the sleeves to be easily printed on, for easy readability of substantial amounts of information.



<b>267-2506</b>	White hi-spec military marker, 12.7mm i/d	TMS-SCE-1/2-2.0-9
<b>267-2461</b>	White hi-spec military marker, 3.2mm i/d	TMS-SCE-1/8-2.0-9
<b>267-2499</b>	White hi-spec military marker, 9.5mm i/d	TMS-SCE-3/8-2.0-9
<b>267-2556</b>	Yellow hi-spec military marker, 3.2mm i/d	TMS-SCE-1/8-2.0-4
<b>267-2562</b>	Yellow hi-spec military marker, 4.8mm i/d	TMS-SCE-3/16-4
<b>267-2578</b>	Yellow hi-spec military marker, 6.4mm i/d	TMS-SCE-1/4-2.0-4
<b>267-2613</b>	Yellow hi-spec military marker, 2.4mm i/d	TMS-SCE-3/32-4

### Cable Clamps Series 1& 2

- Designed for use with TE Connectivity's CPC (Circular Plastic Connectors) range, these cable clamp shells offer housing for a robust and reliable connection system.



<b>411-438</b>	Shell size 17A	182655-1
<b>411-416</b>	Shell size 11B	182658-1
<b>411-422</b>	Shell size 13	182663-1
<b>411-444</b>	Shell size 23A	182652-1

### Acti9 PowerTag Energy Sensor

- Professional range of Acti9 PowerTag Energy sensors. The sensors work on a wireless communication and can be mounted either downstream or upstream. All the sensors are highly reliable and excellent quality.



<b>134-8658</b>	1PW MAX 63A	A9MEM1520
<b>134-8659</b>	1PN UP MAX 63A	A9MEM1522
<b>134-8660</b>	1PN DOWN MAX 63A	A9MEM1540
<b>134-8661</b>	3P MAX 63A	A9MEM1541
<b>134-8662</b>	3PN UP MAX 63A	A9MEM1542
<b>134-8663</b>	3PN DOWN MAX 63A	A9MEM1542

### Acti9 Smartlink - MODBUS CONCENTRATOR TCP/IP ET

- Professional range of Schneider Electric Acti9 smartlink communications and accessories. The modules are designed to be mounted between 2 horizontal DIN rails. Accessories include USB-Modbus test cable. All models are highly reliable and excellent quality.



<b>134-8667</b>	MODBUS CONCENTRATOR TCP/IP ET	A9XMZA08
-----------------	-------------------------------	----------

### Acti 9 RCBO

- iDPN Vigi is a range of residual current devices that integrates MCB and RCD functions and provides protection against overcurrents and insulation faults.



<b>790-9480</b>	iDPN N RCBO 40A Curve B 30mA TypeA	A9D56640
<b>790-9500</b>	iDPN N RCBO 6A Curve C 30ms TypeAC	A9D31606
<b>790-7327</b>	iDPN N 40A Curve C 30ms Type AC	A9D31640
<b>790-7309</b>	iDPN N RCBO 32A Curve C 30ms TypeA	A9D32632

### Acti9 PowerTag Energy Sensor - Distribution Board

- Professional range of Acti9 PowerTag Energy sensors. The sensors work on a wireless communication and can be mounted either downstream or upstream. All the sensors are highly reliable and excellent quality.



<b>134-8665</b>	Energy Sensor	A9PTGRK
<b>134-8666</b>	Energy Sensor	A9PTGEXTNP

### Multi function NFC Timing Relay

- The Zelio NFC timing relay is enabled and controlled by NFC (near field communication) technology available in present-day-smartphones.



<b>914-5070</b>	NFC Timing Relay 240VAC/DC	RENF22R2MMW
-----------------	----------------------------	-------------

### Schneider Electric Motor Circuit Breakers GV2

- The GV2 series offers short circuit and overload protection
- Can be used for disconnection
- Single phase sensitivity
- Lockable in the off position



<b>395-0245</b>	TeSys GV2ME motor circuit breaker 4-6.3A	GV2ME10
<b>305-2133</b>	EMERGENCY STOP FOR MOTOR STARTER	GV2K031
<b>608-8472</b>	ENCL. WITH PUSH BUTTON, GV2MCK04	GV2MCK04
<b>608-8466</b>	SURFACE MOUNT.ENCL., GV2MC01	GV2MC01

### Acti9 Smartlink - CONCENTRATOR TCP/IP ET

- Professional range of Schneider Electric Acti9 smartlink communications and accessories. The modules are designed to be mounted between 2 horizontal DIN rails. Accessories include USB-Modbus test cable. All models are highly reliable and excellent quality.



<b>134-8664</b>	Acti9 Smartlink	A9XMWA20
<b>125-1394</b>	USB-MODBUS CABLE TEST ACTI 9 SMARTLINK	A9XCATM19
<b>125-1389</b>	SMART MODBUS RS485 COMMUNICATING I/O MOD	A9XMSB11
<b>125-1386</b>	MODBUS TCP/IP COMMUNICATING I/O MODULE	A9XMEA08

### Acti 9 MCB

- iC60H curve B, C, D circuit breakers are multi-standard circuit breakers which combine circuit protection against short-circuit currents and circuit protection against overload currents.



<b>791-3341</b>	iC60H MCB 2 Pole 10A Curve C	A9F54210
-----------------	------------------------------	----------

### Altivar ATV320 Series

- Professional range of AVT320 Variable speed drives from Schneider Electric. The Altivar machine AVT320 drive is a frequency inverter for 380 V to 500 V 3 phase asynchronous and synchronous motors rated from 0.18 KW to 15 KW.



<b>125-3249</b>	ATV320 1,1KW 400V 3PH COMPACT VSD	ATV320U11N4C
<b>125-3236</b>	ATV320 0,37KW 400V 3PH BOOK VSD	ATV320U04N4B
<b>125-3237</b>	ATV320 0,37KW 400V 3PH COMPACT VSD	ATV320U04N4C
<b>125-3255</b>	ATV320 2,2KW 200V 1PH COMPACT VSD	ATV320U22M2C
<b>125-3246</b>	ATV320 1,1KW 200V 1PH BOOK VSD	ATV320U11M2B
<b>125-3252</b>	ATV320 1,5KW 400V 3PH BOOK VSD	ATV320U15N4B

### 3 pole Contactors, AC Controlled, under 18kW power rating.

- TeSys D LC1D 3 Pole Contactor, 32 A, 120 V ac Coil



<b>744-7396</b>	3P CONT 32A AC3 15KW 1NO 1NC 120VAC COIL	LC1D32G7
<b>400-1495</b>	AC controlled contactor, 4kW 9A 110V coil	LC1D09F7
<b>400-1603</b>	TeSys D contactor 32A 110Vac coil	LC1D32F7
<b>394-9813</b>	AC controlled contactor, 9A 24Vac coil	LC1D09B7
<b>394-9712</b>	TeSys D contactor 18A 230Vac coil	LC1D18P7
<b>394-9649</b>	TeSys D contactor 32A 230Vac coil	LC1D32P7
<b>608-9352</b>	3 pole NO contactor, 9A - 220Vac coil	LC1D09M7

### Mini-Contactors- SK

- TeSys SK LC1S 2 Pole Contactor, 6 A, 240 V ac Coil.



<b>744-7746</b>	2 Pole mini contactor, SK, 240Vac, 2.2KW	LC1SK0600U7
<b>744-8002</b>	2 Pole mini contactor, 1.1Kw, 24Vdc, LP1SK	LP1SK0600BD
<b>744-8011</b>	2 Pole mini contactor, 1.1Kw, 48Vdc, LP1SK	LP1SK0600ED
<b>744-8014</b>	2 Pole mini contactor, 1.1Kw, 12Vdc, LP1SK	LP1SK0600JD
<b>262-1097</b>	3 pole 1NO mini contactor, 240V coil	LC1SKGC310U7
<b>262-0965</b>	2P contactor for 1phasemotor, 110Vac coil	LC1SK0600F7
<b>744-7734</b>	2 Pole mini contactor, SK, 24Vac, 2.2 KW	LC1SK0600B7

### Illuminated Pushbuttons

- XB6 series illuminated push buttons with rectangular, square or circular head.



<b>609-6344</b>	Illuminated Green LED 24V	XB5AW33B5
<b>609-6338</b>	Illuminated White LED 24V	XB5AW31B5
<b>609-6350</b>	XB5AW33M5	XB5AW33M5
<b>815-1847</b>	LED 250V 22MM XB5B +OPTIONS	XB5AW3165
<b>123-8170</b>	III Round Yellow 1NO/1NC 220V	XB5AW35M5
<b>123-8168</b>	III Round white 1NO/1NC 220V	XB5AW31M5
<b>123-8169</b>	III Round Red 1NO/1NC 220V	XB5AW34M5

### Heads for Emergency Stop ZB4-B

- Harmony Emergency Button, Twist to Reset, Red 40mm Mushroom Head.



<b>330-9388</b>	Twist to release emergency stop switch	ZB4BS844
<b>330-9394</b>	ZB4 keyrelease emergency stop switch, 22mm	ZB4BS944

### Harmony XB4 Emergency Stop Push Buttons

- Schneider range of emergency stop push buttons from the Harmony range feature trigger action actuation. This eliminates the complicated decision of which emergency stop push button you need for the desired application.



<b>795-1306</b>	40mm Turn Release Red 1NC	XB4BS8442
<b>795-1315</b>	40mm Key Release Red 1NC	XB4BS9442
<b>795-1318</b>	40mm Pull Release Red 1NC	XB4BT842
<b>795-1283</b>	40mm ATEX Key Rel NO/NC	XB4BS9445EX
<b>122-2311</b>	Emergency Stop Red 40mm Twist reset 2NC	XB4BS8444

### 92 Series Power Relays

- The 92 series power relays offer a small package size and features Class F insulation for a maximum coil temperature of 155°C.



<b>814-8456</b>	DPDT, 30A-NO, 3A-NC, 300 V	2961367
<b>814-8450</b>	DPST-NO, 30/20 A ac/dc	92S7A22D-24
<b>814-8462</b>	DPST-NO, 30 A, 12V dc, screw	92S7D22D-12
<b>814-8453</b>	DPST-NO, 30 A, 24V dc, screw	2961370
<b>814-8469</b>	DPST-NO, 30 A, 120V ac, screw	DPM 340

### XS Series Inductive Proximity Sensors - Rectangular Design

- The OsiSense XS range of rectangular sensors can be installed quickly and easily on any machine or piece of equipment due to the unique one-click mounting system and the flexibility that the rotating detection head offers.



<b>793-1819</b>	15mm DC PNP Con PG13	XS8C4A1PCG13
<b>793-1807</b>	15mm AC DC, Con PG13	XS7C4A1MPG13
<b>793-1822</b>	20mm AC DC, Con PG13	XS8C4A1MPG13
<b>816-3730</b>	DC NPN NO/NC 4Wire 40MM	XS8C4A4NCN12
<b>816-3752</b>	DC Analog 420MA 25MM	XS9C4A2AN12

### Standard Limit Switch Body / LED (ZCKJ)

- Telemecanique OsiSense XCKJ series limit switch bodies allows complete limit switch assemblies to be constructed using ZCKE/Y limit switch heads and actuators.



<b>360-8427</b>	Limit Switch body Snap action NO+NC M20	ZCKJ1H29
<b>360-8477</b>	1NO/1NC limit switch w/24V LED & conduit	ZCKJ1H121
<b>360-8449</b>	1NO 1NC limit switch w/24V LED&conduit	ZCKJ1H29
<b>609-3761</b>	Limit Switch body Slow action NO+NC Pg13	ZCKJ5

### XCSP Series, Safety Limit Switches

- The Schneider XCSP series of compact industrial limit switches are designed for monitoring access doors and/or guards on machines with low inertia and also on machines with high inertia, when used in conjunction with actuator operated guard switches.



<b>814-7974</b>	Safety limit switch compact plastic	XCSP3719N12
<b>132-9173</b>	Safety Limit Switch, Metal Plunger, M20	XCSP3902P20
<b>814-7970</b>	Safety limit switch compact plastic	XCSP3710N12
<b>814-7977</b>	Safety limit switch compact plastic	XCSP3702N12
<b>132-9172</b>	Safety Limit Switch, Plastic Plunger M20	XCSP3918P20
<b>132-9179</b>	Safety Limit Switch, Metal Plunger, M20	XCSP3910P20



### Siemens IoT2020 Educational Intelligent Gateway

- The IoT2020 gateway is compatible with most Arduino sketches that can be uploaded directly from the Arduino IDE. Many other programs can be compiled and or run under Yocto Linux on the used controller X1000 SOC (X86).



**124-4037** IoT2020 Educational Intelligent Gateway 6ES7647-0AA00-0YA2

### LOGO! 8 - Expansion Modules

- LOGO!8 is the latest generation of intelligent Logic Modules from Siemens, offering a refined upgrade from the previous generation. Improvements include simplified handling, new optical indicating display and full communication functions via Ethernet acr



<b>825-1681</b>	DM8 12/24 4DI/4DO	6ED1055-1MB00-0BA2
<b>825-1685</b>	DM16 8DI/8DO	6ED1055-1NB10-0BA2
<b>825-1688</b>	DM8 24R 4DI/4DO	6ED1055-1HB00-0BA2
<b>825-1691</b>	AM2 24V 2AO	6ED1055-1MM00-0BA2
<b>825-1675</b>	DM8 230R 4DI/4DO	6ED1055-1FB00-0BA2
<b>825-1679</b>	DM16 230R 8DI8DO	6ED1055-1FB10-0BA2

### Sirius Soft Starter - 3RW40 range

- May be integrated into a motor control system using other Sirius control gear products, e.g. 3 pole circuit breakers from the 3RV10 range [see Control Gear section]
- Two phase control, plus soft starting and stopping of three phase asynchronous motors
- Low power loss
- Adjustable start-up voltage between 40 to 100% of working voltage



<b>746-4956</b>	S2,45A,24V AC/DC	3RW40361BB04
<b>746-4969</b>	S6,145A,115V AC	3RW40566BB34
<b>420-491</b>	3RW40 5.5kW 400V	3RW4024-1BB14
<b>420-502</b>	3RW40 11kW 400V	3RW4026-1BB14
<b>420-520</b>	3RW40 45kW 400V	3RW4046-1BB14
<b>746-4965</b>	S6,134A,230VAC	3RW4055-6BB44
<b>746-4969</b>	S6,145A,115V AC	3RW4056-6BB34

### LOGO! 8 - Logic Modules

- LOGO!8 is the latest generation of intelligent Logic Modules from Siemens, offering a refined upgrade from the previous generation.



<b>825-1641</b>	230RCE with display	6ED1052-1FB00-0BA8
<b>825-1653</b>	24RCE with display	6ED1052-1HB00-0BA8
<b>825-1644</b>	12/24RCE w. display	6ED1052-2CC01-0BA6
<b>825-1669</b>	24CEO w/o display	6ED1052-2CC01-0BA8
<b>825-1647</b>	12/24RCEO	6ED1052-2MD00-0BA8

### SIMATIC HMI TP Comfort Series

- The SIMATIC TP comfort series from Siemens comes in a variety of wide-screen displays ranging from 7" to 22" with touch screen operation. All SIMATIC comfort panels are IP65 rated for harsh conditions and are flexible for any outdoor application.



<b>864-3986</b>	TP1900 Comfort 19"	6AV2124-0UC02-0AX0
<b>864-3977</b>	TP1500 Comfort 15"	6AV2124-0QC02-0AX0
<b>864-3973</b>	TP900 Comfort 9"	6AV2124-0JC01-0AX0
<b>864-3970</b>	TP700 Comfort 7"	6AV2124-0GC01-0AX0
<b>864-3989</b>	TP2200 Comfort 22"	6AV2124-0XC02-0AX0

### Sirius Innovation - Motor Circuit Breakers 3RV20

- Circuit-breaker for motor protection
- Screw connection/ Sping clamp
- Class 10
- Impulse voltage resistance 6 kV
- Insulation voltage 690V
- Real loss power only 6/7W



<b>706-1813</b>	Spring Connector 6.3A	3RV2011-1GA20
<b>706-1863</b>	Screw connection 25a	3RV2021-4DA10
<b>706-1774</b>	Screw connection 1.6a	3RV2011-1AA10
<b>706-1803</b>	Spring Connector 4A	3RV2011-1EA20
<b>875-1119</b>	S2, class 10	3RV2031-4PA10
<b>875-1122</b>	S2, class 10	3RV2031-4VA10

### LOGO! 8 - TD Starter Kit

- LOGO!8 is the latest generation of intelligent Logic Modules from Siemens, offering a refined upgrade from the previous generation.



**838-4882** TD Starter Kit 12/24V 6ED1057-3BA10-0AA8

### Sirius Innovation - Contactors - 3RT2 Range

- The 3RT2 contactors are climate-proof and are suitable and tested for use worldwide, sizes S00 to S2, up to 37 kW.



<b>875-1068</b>	Contactor AC3 30kW INO+INC 24V 3P S2	3RT2037-1NB30
<b>706-1377</b>	11kW 24Vdc NC aux spring	3RT2026-2BB40
<b>706-1122</b>	4kW 24Vdc NO aux screw	3RT2016-1BB41
<b>706-1352</b>	11kW 24Vdc NC aux screw	3RT2026-1BB40
<b>706-1150</b>	4kW 24Vdc NC aux spring	3RT2016-2BB42
<b>706-1106</b>	3kW 24Vdc NC aux spring	3RT2015-2BB42



### SITOP PSU100S 1-phase

- The one-phase SITOP smart are the universal and powerful standard power supplies for machinery and plant engineering.

<b>776-7729</b>	PSU 100S 24V/10A	6EP1334-2BA20
<b>776-7725</b>	PSU 100S 24V/5A	6EP1333-2BA20
<b>776-7722</b>	PSU 100S 24V/2.5A	6EP1332-2BA20
<b>776-7738</b>	PSU 100S 12V/7A	6EP1322-2BA00
<b>776-7731</b>	PSU 100S 12V/14A	6EP1323-2BA00

### Type C Double Pole 6kA - System Pro M Compact

- The System Pro M Compact range of Miniature Circuit Breakers from ABB, for use in Residential, Commercial and Industrial applications with a tripping characteristic of Type C.



<b>746-7699</b>	2A 2 Pole Type C 6kA	2CDS252001R0024
<b>746-7716</b>	16A 2 Pole Type C 6kA	2CDS252001R0164
<b>746-7719</b>	10A 2 Pole Type C 6kA	2CDS252001R0104
<b>746-7703</b>	4A 2 Pole Type C 6kA	2CDS252001R0044
<b>746-7706</b>	6A 2 Pole Type C 6kA	2CDS252001R0064
<b>746-7731</b>	40A 2 Pole Type C 6kA	2CDS252001R0404
<b>746-7738</b>	63A 2 Pole Type C 6kA	2CDS252001R0634

### CM-PFS Phase Sequence & Loss Monitor

- On fault, relay de-energizes & yellow LED turns off
- No ON delay



<b>775-7936</b>	CM-PFS.S Three Phase Monitoring Relay	1SVR730824R9300
<b>861-6587</b>	Three Phase Monitoring Relay	1SVR730824R9300
<b>775-8021</b>	Three Phase Push in Monitoring Relay	1SVR740824R9300

### Non Fused Switch Disconnectors, 3 Pole Base & DIN Rail Mounting

- Professional range of Non fused switch disconnectors suitable for a wide range of applications including motor control centres, switchboards and mains switches in various equipment and machines.



<b>686-7281</b>	Switch,discon,non-fuse, DIN rail, 3P 80A	1SCA105798R1001
<b>686-7290</b>	Switch,discon,non-fuse, DIN rail, 3P 125A	1SCA105033R1001
<b>686-7266</b>	Switch,discon,non-fuse, DIN rail, 3P 40A	1SCA104902R1001
<b>686-7269</b>	Switch,discon,non-fuse, DIN rail, 3P 25A	1SCA104857R1001
<b>686-7256</b>	Switch,discon,non-fuse, DIN rail, 3P 16A	1SCA104811R1001
<b>861-6511</b>	Switch Disconnecter, 6-Pole, 25A	OT25F6
<b>861-6568</b>	Switch Disconnecter, 3-Pole, 200A	OT200U03

### PSE Soft Starter

- The PSE softstarter range is the world's first compact softstarters with Torque Control. This makes the PSE range an excellent choice for pumping application where water hammering normally is a big problem.



<b>732-8346</b>	45A Softstarter with Overload	1SFA897105R7000
<b>732-8349</b>	30A Softstarter with Overload	1SFA897103R7000
<b>732-8352</b>	85A Softstarter with Overload	1SFA897108R7000
<b>732-8355</b>	60A Softstarter with Overload	1SFA897106R7000
<b>732-8358</b>	72A Softstarter with Overload	1SFA897107R7000
<b>732-8361</b>	105A Softstarter with Overload	1SFA897109R7000
<b>732-8364</b>	142A Softstarter with Overload	1SFA897110R7000

### AF Range Contactors, 3 Pole

- AF09-AF38 contactors include an electronic coil interface accepting a wide control voltage U<sub>cm</sub> - U<sub>max</sub>. Only four coils cover control voltages 24 → 500 Vac or 20 → 500 Vdc.



<b>711-6115</b>	75kW 100-250VAC/DC NO	1SBL177001R1310
<b>711-6111</b>	5.5kW 100-250VAC/DC NO	1SBL157001R1310
<b>711-6171</b>	75kW 100-250VAC/DC NC	1SBL177001R1301
<b>764-8996</b>	5.5kW 24-60AC20-60DC NO	AF12-30-10-11

### ABB Energy Meter C11 Single-Phase Steel-Level

- The C series are products, without communication, intended for stand alone energy measurement up to 40 A direct connected.
- There are suitable for installation in distribution boards and small customer units.



<b>789-4082</b>	C11 110 series	2CMA100014R1000
-----------------	----------------	-----------------

### RT9 Safety Relay Series

- The RT9 safety relay series from ABB comprises of a compact universal design to supervise both your safety devices and the internal safety of your machinery. The RT9 safety relay allows the safety level to be independently configured for different installations.



<b>733-2391</b>	24Vdc, 2NO	2TLA10029R0000
-----------------	------------	----------------

### Multi Function Timer Relay CT-MFE

- CT-MFE
- Functions - 11,211, 421, 431, 611, 612
- Direct reading scales for fast positive adjustment
- Rotary switch selection of desired function
- LEDs for status indication
- 22.5mm wide



<b>442-9297</b>	CT-MFE SPDT 6 function timer,0.05-100hr	1SVR550107R1100
-----------------	---	-----------------

### CM-PVS Three-Phase Monitoring Relays

- The CM-PVS.x1 are monitoring relays for three-phase mains. They monitor the phase parameters phase sequence, phase failure, over- and undervoltage. The threshold values for over- and undervoltage are adjustable.



<b>775-7895</b>	CM-PVS.41S Three Phase Monitoring Relay	1SVR730010R3200
<b>775-8043</b>	Three Phase Monitoring Relay 300-500 Vac	1SVR740794R3300
<b>861-6530</b>	Three Phase Monitoring Relay	1SVR730010R3200

### Fluke 180LR and 180LG Cross Line Laser Level

- Fluke 180LR and 180LG 2-line laser levels feature bright, crisp plumb and level lines across a 180-degree field of view. A rugged build that is expected from every Fluke tool.



**125-4014** 2 line laser level green FLUKE-180LG  
**125-4013** 2 line laser level red FLUKE-180LR

### Fluke 985 Particle Counter

- Six channels and a particle size range of 0.3 µm to 10 µm
- Ultra-lightweight and ergonomic design for easy single-handed operation
- Ten hours battery life (Li-ion 7.4V 2600mAh) to last a full work day
- Large 3.5 inch QVGC colour display with backlight, intuitive icons, large font options make for easy navigation and viewing
- 10,000 records stored in device for easy access to historical data
- On screen data presentation
- Personalized setting and configurations
- Data export to USB memory stick or direct connection to PC via USB cable.
- No special software required to view Excel compatible files



**762-1247** Airborne Particle Counter FLUKE 985

### Fluke Ti400 Thermal Imager 9 Hz

- Powerful high-performance features make troubleshooting fast and easy
- AutoFocus Redefined
- On target and in-focus every time
- Compatible with the largest suite of connected test tools in the world
- Capture 5 additional measurements using the Wireless CNX System for more comprehensive analysis and reporting
- Detect and communicate your issues faster using the patented Fluke IR Fusion technology featuring AutoBlend mode
- Detector 320 x 240 pixels
- Faster communications with wireless imagery transfers directly to PC, Apple iPhone or iPad



**788-4662** Ti400 Thermal Imaging Camera FLK-Ti400 9HZ

### Fluke 279 FC Thermal Multimeter with iFlex®

- Full-featured digital multimeter with integrated thermal camera
- Expanded measurement capabilities with iFlex®
- Memory storage through Fluke Connect® measurements app
- Colour LCD screen
- 10 hour+ rechargeable battery
- 15 measurement functions
- Rugged, able to withstand a 3 m drop
- CAT III 1000 V, CAT IV 600 V measurement category



**111-5341** Wireless Thermal Multimeter with iFlex Fluke 279 FC IFLEX

### Fluke 360 Series True-RMS Clamp Meters

- Features and Benefits
- Forward facing work light, plus backlit display
- Highest resolution of 1 µA
- True RMS for accurate measurements of complex signals
- Selectable filter function eliminates unwanted noise
- CAT III 600 V safety Rating
- Fluke 368 FC Jaw Diameter: 40 mm
- Fluke 369 FC Jaw Diameter: 61 mm



**123-4545** 369 FC Leakage Current Clamp Meter FLUKE-369 FC  
**123-4544** 368 FC Leakage Current Clamp Meter FLUKE-368 FC

### Fluke 62 MAX and MAX+ Infrared Thermometers

- Dust and water-resistant: IP54 rated for dust and water resistant
- Rugged: 3-meter (9.8-foot) drop tested
- Ergonomically designed: Completely redesigned for a more natural hand fit
- Small and lightweight; clips to your tool belt or belt loop or easily fits into your tool box
- Distance to spot: Precise laser technology makes for more accurate and repeatable measurements



**760-0385** 62 MAX Infrared Thermometer FLUKE 62 MAX  
**760-0389** 62 MAX PLUS Infrared Thermometer FLUKE-62 MAX PLUS

### Fluke 700G Series

- Fluke 700G Series precision pressure gauge calibrators are portable, high quality calibrators offering fast and accurate calibration test results. The 700G models are easy-to-use and of rugged construction for reliable performance in different environments.



**798-8761** Reference,1000 PSIG FLUKE-700RG08  
**758-8914** 10,000 PSIG Fluke-700G31  
**758-8901** 300 PSIG Fluke-700G27  
**798-8749** Absolute,30 PSIA FLUKE-700GA5  
**798-8720** 2000 PSIG FLUKE-700G10  
**758-8908** 1,000 PSIG Fluke-700G08

### Fluke 373 Clamp Meter

- Large backlit display
- 600 A ac current measurement with fixed jaws
- 600 V ac (true rms) and dc voltage measurement
- Capacitance, resistance and continuity measurement
- Display HOLD
- CAT IV 300V, CAT III 600 V safety rating



**705-1948** Max Current 600A ac CAT III 600 V, FLUKE-373/E CAT IV 300 V

### Fluke 115 Multimeter

- Large white LED backlight to work in poorly lit areas
- Resistance and continuity
- Frequency and capacitance
- Maximum Voltage ac/dc 600V
- 10A ac/dc current measurement
- Min/Max/Average to record signal fluctuations
- CAT III 600 V safety rated



**616-1454** 115 digital multimeter FLUKE-115 EUR

### Fluke 28II Ex Intrinsically Safe True-RMS Digital Multimeter

- A completely sealed, IP67 rated case
- Withstands drops up to 10 ft or 3 m (with holster)
- Dustproof per IEC60529 IP6x
- Waterproof per IEC60529 IPx7
- Meets IEC Overvoltage Electrical Safety Standard No. 61010-1:2001
- Measurement Category III, 1000V, Pollution Degree 2
- Measurement Category IV, 600V, Pollution Degree 2
- Reversible holster for added protection of the display when not in use



**760-0398** Intrinsically Safe Multimeter ATEX IECEx FLUKE 28 IIEX

### Fluke 1577 & 1587 Insulation Multimeters

- Large display with backlight
- Insulation test: 1587: 0.01 MΩ to 2 GΩ. 1577: 0.1 MΩ to 600 MΩ
- Insulation test voltages (V) 1587: 50, 100, 250, 500, 1000; 1577: 500, 1000 for many applications
- Live circuit detection prevents insulation test if voltage >30V is detected for added user protection
- Auto-discharge of capacitive voltage for added user protection
- AC/DC voltage, DC millivolts, AC/DC milliamps, Resistance (Ω), Continuity
- Auto power off



**914-5420** 1587 Insulation Multimeter F-1587  
**512-2492** 1577 Insulation Multimeter FLUKE-1577

### Fluke 435 Power Quality Analyser

- Energy loss calculator: Classic active and reactive power measurements, unbalance and harmonic power, are quantified to pinpoint the fiscal costs of energy losses.
- Troubleshoot real-time: Analyze the trends using the cursors and zoom tools.
- Highest safety rating in the industry: 600 V CAT IV/1000 V CAT III rated for use at the service entrance.
- Measure all three phases and neutral: With included four flexible current probes with enhanced thin flex design to fit into the tightest places.
- Automatic trending: Every measurement is always automatically recorded, without any set-up.
- System-monitor: Ten power quality parameters on one screen according to EN50160 power quality standard.
- Logger function: Configure for any test condition with memory for up to 600 parameters at user defined intervals.
- View graphs and generate reports: With included analysis software.



**752-5008** 435 Series II Power Quality Analyser FLUKE 435-II

### Fluke Industrial ScopeMeter 190 Series II

- Instrument dimensions 270 x 190 x 70 mm
- Display 153mm full colour LCD with fast update rate
- CAT III 1000V/ CAT IV 600V overvoltage categories
- Real-time sampling rates up to 2.5 GS/s and 400 ps resolution
- Deep memory: 10,000 samples per channel waveform capture so you can zoom in on the details
- Single shot, pulse width, and video triggering
- Isolated USB ports for memory devices and PC connectivity
- IP-51 rated for dust and drip proof to withstand harsh environments



**716-7387** 200 MHz, colour FLUKE-190-204/UK  
**716-7396** 100 MHz, colour FLUKE-190-104/UK  
**737-8259** 200MHz, col. UNI, SCC FLUKE-190-204/UN/SCC  
**811-1243** 500MHz FLUKE 190-504/UN

### Fluke 1625 Earth & Ground Resistance Tester Kit

- 3- and 4-pole Fall-of-Potential, earth resistance loop testing
- 4-pole Soil Resistivity testing
- Selective earth ground rod testing using 1 clamp
- Stakeless earth ground rod testing using 2 clamps
- IP56 rated for outdoor use
- Rugged carrying case
- USB data storage and transfer



**798-3974** 1625 Earth & Ground Resistance Tester Kit FLUKE-1625-2 KIT

### Fluke 971 Humidity & Temperature Meter

- New and improved digital sensor for faster response times
- Simultaneously measure temperature and humidity
- Measure dewpoint and wet bulb temperatures
- 99 record storage
- Backlit dual reading display f humidity and temperature
- Low battery indicator
- Compact and lightweight at 188 g (6.6 oz)



**724-4193** 971 Thermohygrometer FLUKE-971

### Fluke 120B Series Industrial ScopeMeter 123B

- Instrument dimensions 270 x 190 x 70 mm
- Display 153mm full colour LCD with fast update rate
- CAT III 1000V/ CAT IV 600V overvoltage categories
- Real-time sampling rates up to 2.5 GS/s and 400 ps resolution
- Deep memory: 10,000 samples per channel waveform capture so you can zoom in on the details
- Single shot, pulse width, and video triggering
- Isolated USB ports for memory devices and PC connectivity



**736-2336** 200MHz, colour, UK FLUKE 190-202/UK  
**736-2324** 60MHz, colour, UK FLUKE 190-062/UK  
**773-3574** VPS510-B scopemeter 500MHz probe blue VPS510-B  
**811-1234** ScopeMeter 4 channels 500MHz FLUKE-190-504/UK

### Fluke Multifunction Process Calibrator 725

- Small, streamlined shape, easy to carry
- Easy to read measure/source screen lets you view input and output simultaneously
- Measure mA, volts, RTDs, thermocouples, frequency and ohms to test sensors and transmitters
- Source/simulate volts, mA, RTDs, thermocouples, frequency and ohms to calibrate transmitters
- Measure/source pressure via external pressure modules
- Support flow meter testing with frequency and CPM functions
- Perform a fast linearity test with auto-step and auto-ramp features



**331-7452** 725 Multi Function Calibrator 30V 24A FLUKE 725US

### Fluke 805 Vibration Meter

- "Sensor tip design minimises measurement variations
- Low & high frequency ranges
- USB connection enables data export to Excel
- Trending in Excel using built-in templates
- Overall vibration measurement (10 Hz to 1,000 Hz)
- Colored lighting system indicates pressure needed to be take measurements
- Memory: Up to 3500 measurements
- Operating temperature: -20 → 50°C"



**761-2944** 805 Vibration Meter FLUKE-805

### QUINT 4 Power Supply Unit, 1 and 3 Phase

- Primary-switched QUINT4 power supply for DIN Rail mounting with free choice of output characteristic curve and SFB (Selective Fuse Breaking) technology.



<b>123-4306</b>	1-Phase, 24 V DC, 10 A	2904601
<b>123-4307</b>	1-Phase, 24 V DC, 20 A	2904602
<b>123-4308</b>	3-Phase, 24 V DC, 5 A	2904620

### Bluetooth Ethernet Adaptor and Converter

- The FL BT EPA can be used to reliably and quickly transmit ethernet data in automation networks. With the new 'Lean-Stacks', the FL BT EPA speed is more than double as compared to the previous solutions.



<b>801-7356</b>	Bluetooth Ethernet Port 2701416 Adapter	
<b>690-0057</b>	Wireless Bluetooth Ethernet Adapter	2693091

### PLC-RSC Series Optocoupler

- PLC Interface single- and double-pole relays, and opto-couplers, having the same profile. This allows the modules to be installed in any configuration with a common bridging system and using the same accessories.



<b>306-6558</b>	PLC-OSC- 24DC/ 24DC/ 2	2966647
<b>801-8024</b>	REL-MR- 12DC/21AU	2291121
<b>801-8201</b>	PLC-RSC- 24UC/21-21AU	2813460
<b>434-1333</b>	PLC-RSC- 24UC/21-21	2967073

### QUINT Uninterruptible Power Supplies with Storage

- Uninterruptible battery power supply units are the ideal solution to an unstable mains supply. With IQ technology they provide information regarding the charging state, remaining runtime and the service life of your rechargeable battery module.



<b>761-7630</b>	24DC/5/1,3AH	2320254
<b>761-7649</b>	24DC/10/3,4AH	2320267
<b>739-7878</b>	24Vdc/24Vdc, 40A	2320241
<b>739-7869</b>	24Vdc/24Vdc, 20A	2320238
<b>739-7865</b>	24Vdc/24Vdc, 10A	2320225

### MINI Analog Pro Signal Conditioners

- The Mini Analog Pro signal conditioners from Phoenix Contact are the first 6mm range with plug-in connection technology. Using the latest switching technology, applications are made quicker and easier with the signal conditioners' highly compact and visibility.



<b>849-6351</b>	MINI MCR-2-FM-RC	2904504
<b>890-3884</b>	Constant voltage source	PTFPCB
<b>849-6314</b>	Signal conditioner	2902026
<b>849-6349</b>	Resistance/potipotision transducer	PFC-A1 -PAIR-
<b>849-6367</b>	MINI MCR-2-UI-UI-PT	2902040
<b>849-6377</b>	MINI MCR-2-I0-U-PT	2902001
<b>849-6386</b>	Repeater power supply	2902015

### Feed Through Terminal Block, UT series

- UT Terminals
- All metal parts are of high strength copper alloys
- Simple multi-conductor connection
- Maintenance-free "Reakdyn principle"
- All accessories are compatible with the CLIPLINE range



<b>627-3737</b>	Din rail terminal block, UT2.5, grey	3044076
<b>627-3872</b>	Din rail terminal block, UT4, grey	3044102
<b>627-3973</b>	Terminal block cover, UT & PE	3047028
<b>627-3901</b>	Din rail terminal block, UT6, grey	3044131

### Industrial Ethernet Switches in SC-D / ST format

- Comprehensive range of Industrial Ethernet Switches to suit a variety of applications. Auto negotiation & autocrossing makes for a quick & efficient installation. Various temperature ranges and DIN profiles available.



<b>801-7251</b>	7 RJ45 1 FO	2891006
<b>801-7255</b>	7 TP RJ45 1 FO	2891007
<b>801-7258</b>	8 TP RJ45 Port	2891005

### Universal Current Transformer

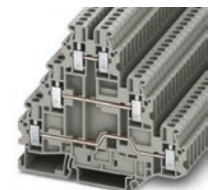
- MCR-SL-CUC series universal current transducer for measuring dc, ac, and distorted currents.



<b>715-7989</b>	I/P 0-200A-O/P 4-20mA	2308030
<b>715-7970</b>	I/P 0-100A-O/P 4-20mA	K3NX-VA1A-C1
<b>801-6315</b>	For Measuring DC/AC	2308098
<b>801-6283</b>	MCR-SL-CUC-300-I	2308043

### UT Multi-Level Terminal Block

- A professional range of UT Multi-level terminal blocks from Phoenix Contact. These Screw connection terminal blocks have a large wiring space that enables the connection of solid and stranded conductors without ferrules.



<b>804-4332</b>	Multi-level terminal block - UT 2,5-3L	3214259
<b>123-8016</b>	UT 6-3L	3046703
<b>804-3143</b>	Protective dbl-level term blk UTTB 2,5	3044678
<b>804-4336</b>	Multi-level terminal block - UT 2,5-3PV	3214262
<b>871-7692</b>	Protective Cond Term Block Gray UTTB2.5	3046731

### RS Pro Metric Thread Repair Kit

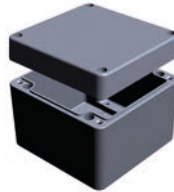
- Features and Benefits
- Repairs stripped or damaged internal threads
- Different kits available to repairs threads from M2.5 to M10
- No engineering experience needed
- Protects tapped threads against wear and tear



**917-2491** RS Pro 20 piece M5 → M12 - Thread Repair Kit

### RS Pro Diecast Aluminium Enclosures

- This diecast aluminium enclosure has a grey powder coat finish and is ATEX and IECEx approved, making it suitable for use in explosive atmospheres. It has an IK09 and IP66 rating which makes it suitable for use in various applications in the process contr



<b>122-8916</b>	100×100×81 mm	EXRJ 09
<b>122-8919</b>	75×80×57 mm	EXRJ 05
<b>122-8920</b>	122×120×91 mm	EXRJ 22
<b>122-8924</b>	250×80×54 mm	EXRJ 08
<b>122-8925</b>	175×80×57 mm	EXRJ 07
<b>122-8926</b>	160×160×91 mm	EXRJ 15

### RS Pro Crimping Tool for Non-Insulated Terminals

- The RS Pro hand crimping tool for crimping non insulated copper tubular and non insulated standard terminals onto wire. This crimping tool has 4 crimping cavities; 6mm<sup>2</sup> (12-10 AWG), 10mm<sup>2</sup> (8 AWG), 16mm<sup>2</sup> (6 AWG) and 25mm<sup>2</sup>



**125-1967** Hand crimping tool, tubular terminals LY-2045E

### RS Pro 32 Piece Colour Ring Bit Set

- The RS Pro 32 piece Colour ring bit set offers a comprehensive range of popular screw bits in one handy set. Colour coded bits to make size identification easier. Magnetic Quick Lock bit holder included.



**125-0441** 32 Piece Colour ring bit set C02076

### RS Pro 88 Pieces VDE/1000 V Electricians Tool Kit

- A comprehensive VDE tool kit with an additional Chrome Vanadium 1/2" socket set supplied in a sturdy protective plastic carry case.



**734-8885** 88pc 1/2in. Socket & VDERBT0199A Tool Kit

### RS Pro 7 Piece Torsion Bit Set

- RS Pro 7 piece torsion bit set offers the most popular screw bits in one handy set. Torsion bits have a longer torsion zone than standard screw bits which helps to give a longer service life.



**125-0436** 7 Piece Torsion style bit set C05005

### RS Pro Anti-Vibration Pedestal Mount

- The RS Pro anti-vibration pedestal mounts designed to take vertical load applied in both shear and compression to give maximum isolation from vibrating machinery. Suitable for use in a wide variety of applications including pumps, compressors and centrifugal.



**126-3893** Mobile/Marine MT 230×70 M20 55 ShA NR KMR23070M20-155

**126-3873** MT 190×66 M20 60 ShA NR KPR19066M20-2

**126-3875** MT 190×50 M16 60 ShA NR KPR19050M16-2

**126-3879** MT 169×40 M16 60 ShA NR KPR16940M16-2

**126-3581** MT M16 Clear Hole 60 shore A KPUM6463M16-2

**126-3582** MT 47×52 M14 60 ShA NR KPUM4752M14-2

**126-3583** MT 32×32 M10 50 ShA Chloroprene SS KPUM3232M10-CRSS-1.5

### RS Pro Hard Bottom Zipped Tool Bag

- RS Pro zipped tool bag designed for the safe transportation of sensitive electronic equipment, tools and components.



**788-7205** 12" Hard Bottom Tool Bag RSTS0001

**788-7214** 16" Hard Bottom Tool Bag RSTS0002

### RS Pro LCD Smart Soldering Station

- The RS Pro LCD Smart Soldering Station is supplied with a high end Alumina ceramic heating element providing you with fast heat recovery. The soldering station has an in-built data memory to store and recall 3 frequently used temperatures.



**124-4132** 60W LCD Soldering Station, UK+ Euro Plug SS-256B

### RS Pro IWR Series Wireless Receiver

- The RS Pro IWR series wireless receiver designed to pair with the IWPT series of wireless pressure transducers. This pairing offers an effective solution for inaccessible installation environments.



<b>123-5252</b>	1 channel	IWR-1
<b>123-5253</b>	5 channel	IWR-5

### RS Pro RCD Non-Switched - IP67

- RS Pro versatile series of socket outlets for when safety and reliability are a priority, pre-wired combination units with RCD protection.
- Modules are available with single or double sockets and have a standard sensitivity of 30mA/30ms.



<b>125-4397</b>	IP67 32A 400V 3P+E RCD Socket Outlet	632.3216-RW
-----------------	--------------------------------------	-------------

### RS Pro 4 Core Unscreened Black PVC Industrial Cable

- An unscreened, multi-core industrial cable.



<b>660-4046</b>	4 core unscreened cable, 7x0.2mm 100m	RS-165
<b>660-4030</b>	3 core unscreened cable, 7x0.2mm 25m	RS-163
<b>660-4043</b>	6 core unscreened cable, 7x0.2mm 100m	RS-165
<b>660-4052</b>	8 core unscreened cable, 7x0.2mm 25m	RS-169
<b>660-4059</b>	12 core unscreened cable, 7x0.2mm 25m	RS-171
<b>660-4068</b>	12 core unscreened cable, 7x0.2mm 100m	RS-171

### RS Pro IWPT Series Wireless Pressure Transducer

- The RS Pro IWPT series wireless pressure transducer is an effective replacement to a traditionally wired pressure transducer in inaccessible and expensive installation environments.



<b>123-5232</b>	0-1barG 1/4"	IWPT-G1000-00
<b>123-5233</b>	0-6barG 1/4"	IWPT-G6000-00
<b>123-5234</b>	-1-9barG 1/4"	IWPT-GM1P9-00
<b>123-5235</b>	0-10barG 1/4"	IWPT-G1002-00
<b>123-5236</b>	0-16barG 1/4"	IWPT-G1602-00

### RS Pro Cat7 U/FTP PVC Cable

- A Cat7 cable with 4 individually foil shielded pairs and PVC sheath.



<b>113-5903</b>	Black PVC100M	UF-7-BLA
<b>113-5906</b>	Grey PVC100M	UF-7-GRY

### RS Pro Red, 100m PVC BS4808 Equipment Wire

- These wires are designed for use wiring within instrumentation panels and control panels. They all meet to the requirements Def Stan 61-12 Part 6. Flame resistant to UL1581 VW-1 and IEC60332-1.



<b>748-2137</b>	Red PVC Equipment Wire 16/0.2mm 100m	3930
<b>748-2112</b>	Black PVC Equipment Wire 16/0.2mm 100m	3923
<b>748-2140</b>	White PVC Equipment Wire 16/0.2mm 100m	3932
<b>748-2115</b>	Blue PVC Equipment Wire 16/0.2mm 100m	3924
<b>748-2147</b>	Black PVC Equipment Wire 16/0.2mm 500m	3923
<b>748-2119</b>	Brown PVC Equipment Wire 16/0.2mm 100m	3925
<b>748-2134</b>	Pink PVC Equipment Wire 16/0.2mm 100m	3929

### Durable Type K, J & T Exposed Welded Tip Thermocouples

- Various types of exposed junction thermocouples with fitted miniature plug and insulated leads, ideal for test and development applications.



<b>123-6328</b>	Type T IEC 0.315mm Thermocouple+Plug 1m	Z2-T-1.0-MP-1/0.315 PFA TTP+MP
<b>123-6321</b>	Type K IEC 7/0.2mm Thermocouple+Plug 2m	Z2-K-2.0-MP-7/0.2 PFA TTP+MP
<b>762-1112</b>	Thermocouple K welded tip 7/0.2mm 5M	XQ-401-RS
<b>762-1118</b>	Thermocouple K welded tip 1/0.315mm 5M	XQ-400-RS
<b>804-7880</b>	IEC Thermocouple, mini Plug, K, 10M	Z2-K-10.0-MP-7/0.2 PFA TTP+MP
<b>804-7886</b>	IEC Thermocouple, mini Plug, K, 10M	Z2-K-10.0-MP-1/0.315 PFA TTP+MP

### RS Pro Stainless Steel Cable Ties

- The 30+ Grade Stainless Steel Roller Ball cable ties have a roller ball mechanism which is self locking, easy and fast to install. Using your hands or a tool the roller ball ties can be tightened easily.



<b>123-5035</b>	360 X 79 mm	SS360HA
<b>123-5034</b>	200 X 4.6 mm	SS200A
<b>123-5036</b>	125 X 4.6 mm	SS125A
<b>123-5037</b>	360 X 4.6 mm	SS360A

### RS Pro ICM20 Current Clampmeter

- The RS Pro ICM20 current clamp meter designed for safe, non-intrusive AC current measurement up to 400 Amps.



123-3230 400 A ICM20

### RS Pro PID Temperature Controller 1/16 DIN

- The 1/16 DIN PID temperature controllers are designed to provide temperature control in an easy to install, fast to program device. The temperature is displayed on a large, highly improved LED display and can be used in various applications.



124-1068	48x48, 24V ac/dc, 2 relay, 1 SSR	RG-C1A23A15KKE
124-1065	48x48, 110-240V ac, 2 relay	RG-C1A23A60KGE
124-1066	48x48, 110-240V ac, 1 relay, 1 SSR	RG-C1A23A25MKE
124-1067	48x48, 24V ac/dc, 1 relay, 2 SSR	RD2001-D
124-1069	48x48, 24V ac/dc, 3 relay	RG-C1A23A25KGU
124-1070	48x48, 110-240V ac, 1 relay, 2 SSR	RG-C1A23A25KKE
124-1071	48x48, 110-240V ac, 2 relay, 1 SSR	RG-C1A23A40KGE
124-1072	48x48, 110-240V ac, 3 relay	RG-C1A23D15KGU

### RS Pro IPS Series Switching DC Power Supplies

- The RS Pro IPS Series switching DC power supplies include models IPS-1820 (0 ~ 18 V, 0 ~ 20 A), IPS-3610 (0 ~ 36 V, 0 ~ 10 A) and IPS-606 (0 ~ 60 V, 0 ~ 6 A).



123-3578	0-36V 0-10A	IPS-3610
123-3579	0-60V 0-6A	IPS-606
123-3577	0-18V 0-20A	IPS-1820

### RS Pro IDM98IV Digital Multimeter

- The RS Pro IDM98IV Digital Multimeter with 6000 count digital display and 62 segment bar graph.



873-2360 IDM98IV Digital Multimeter IDM98IV

### RS Pro IT-1 Infra-Red Thermometer

- The RS Pro IT-1 is an infrared thermometer with a 3 in 1 function of °C/°F convertible infrared temperature measurement, voltage detection and flashlight.



123-3250 IT-1 Infra-Red Thermometer IT-1

### HH digital oscilloscope 200MHz, 2 channel

- The RS Pro RSHS800 Series handheld digital oscilloscopes provide digital oscilloscope, multimeter and recorder (including trends and waveform) functions all in one package.



123-6457	200MHz, 2 channel	RSHS820
123-6455	100MHz, 2 channel	RSHS810
123-6456	150MHz, 2 channel	RSHS815
123-6454	60MHz, 2 channels	RSHS806

### RS Pro RS14 Compact Multimeter Autoranging

- This great value, compact, autoranging multimeter is CAT III rated for 600 V. It has a robust double-moulded plastic housing and oversized high contrast 2,000 Counts LCD display.



123-1938 RS Pro Compact Multimeter Autoranging RS14

### RS Pro Digital Thermometer, 3 Input LCD

- Indoor/Outdoor Thermometer Clock with Hygrometer - Triple Display
- Large, 3 channel LCD display
- Displays time, temperature (select indoor or outdoor) and Relative Humidity
- 3m external temperature sensor
- 0 °C → +40 °C (resolution 0.5 °C) ambient operating temperature
- °C/°F selectable
- 12/24 hour time selectable
- Min/max temperature and humidity memory recall
- Powered by 1 x AAA battery (supplied)



408-6109 3display indoor/outdoor thermometerclock #2410WC

### RS Pro RSDS1000CFL Series Digital Storage Oscilloscopes

- The RS Pro RSDS1000CFL Series digital storage oscilloscopes offer faster sampling rates and higher bandwidths than other RSDS1000 Series scopes. They provide four channels, with an external trigger input channel. Bandwidth is up to 300 MHz, depending on choice of model. A set of separate vertical controls for each input channel means there are no risks of accidentally modifying the wrong trace.



123-6441	200MHz, 4 channels	RSDS1204CFL
123-6442	300MHz, 4 channels	RSDS1304CFL
123-6439	70MHz, 4 channels	RSDS1074CFL
123-6440	100MHz, 4 channels	RSDS1104CFL